

# Interventions

# in Reading

## Phonics

## Fluency

## Comprehension

## Writing

## Spelling

## Grammar

## Punctuation

## Reading

## Math

## Science

## History

## Art

## Music

## Physical Education

## Character Education

## Health

## Environment

## Technology

## Language Arts

## Foreign Languages

## Special Education

## Gifted/Talented

## At-Risk

## English Language Learners

## Special Needs

## Gifted/Talented

## At-Risk

## English Language Learners

## Special Needs

## Gifted/Talented

## At-Risk

## English Language Learners

## Special Needs

## Gifted/Talented

## At-Risk

## English Language Learners

## Special Needs

## Gifted/Talented

## At-Risk

## English Language Learners

## Special Needs

## Gifted/Talented

## At-Risk

## English Language Learners

## Special Needs

## Gifted/Talented

## At-Risk

## English Language Learners

## Special Needs

## Gifted/Talented

## At-Risk

## English Language Learners

## Special Needs

## Gifted/Talented

## At-Risk

## English Language Learners

## Special Needs

## Gifted/Talented

## At-Risk

## English Language Learners

## Special Needs

## Gifted/Talented

## At-Risk

## English Language Learners

## Special Needs

## Gifted/Talented

## At-Risk

## English Language Learners

## Special Needs

## Gifted/Talented

## At-Risk

## English Language Learners

## Special Needs

## Gifted/Talented

## At-Risk

## English Language Learners

## Special Needs

## Gifted/Talented

## At-Risk

## English Language Learners

## Special Needs

## Gifted/Talented

## At-Risk

## English Language Learners

## Special Needs

## Gifted/Talented

## At-Risk

## English Language Learners

## Special Needs

## Gifted/Talented

## At-Risk

## English Language Learners

## Special Needs

## Gifted/Talented

## At-Risk

## English Language Learners

## Special Needs

## Gifted/Talented

## At-Risk

## English Language Learners

## Special Needs

## Gifted/Talented

## At-Risk

## English Language Learners

## Special Needs

## Gifted/Talented

## At-Risk

## English Language Learners

## Special Needs

## Gifted/Talented

## At-Risk

## English Language Learners

## Special Needs

## Gifted/Talented

## At-Risk

## English Language Learners

## Special Needs

## Gifted/Talented

## At-Risk

## English Language Learners

## Special Needs

## Gifted/Talented

## At-Risk

## English Language Learners

## Special Needs

## Gifted/Talented

## At-Risk

## English Language Learners

## Special Needs

## Gifted/Talented

## At-Risk

## English Language Learners

## Special Needs

## Gifted/Talented

## At-Risk

## English Language Learners

## Special Needs

## Gifted/Talented

## At-Risk

## English Language Learners

## Special Needs

## Gifted/Talented

## At-Risk

## English Language Learners

## Special Needs

## Gifted/Talented

## At-Risk

## English Language Learners

## Special Needs

## Gifted/Talented

## At-Risk

## English Language Learners

## Special Needs

## Gifted/Talented

## At-Risk

## English Language Learners

## Special Needs

## Gifted/Talented

## At-Risk

## English Language Learners

## Special Needs

## Gifted/Talented

## At-Risk

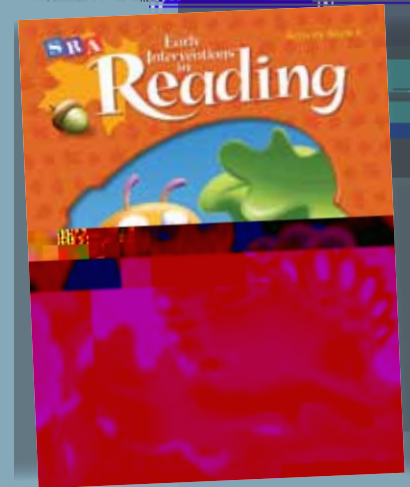
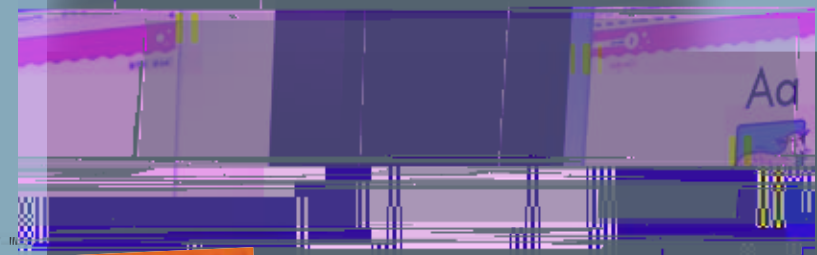
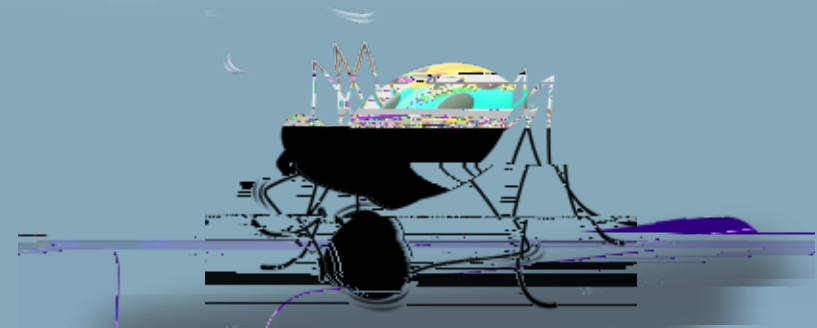
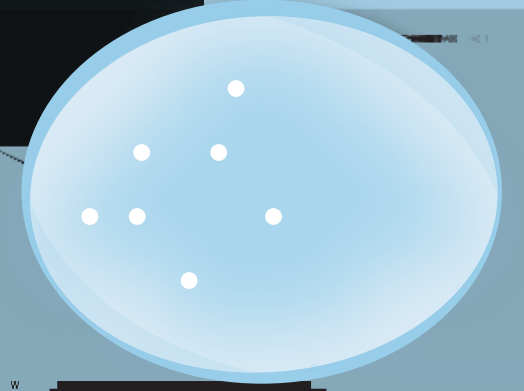
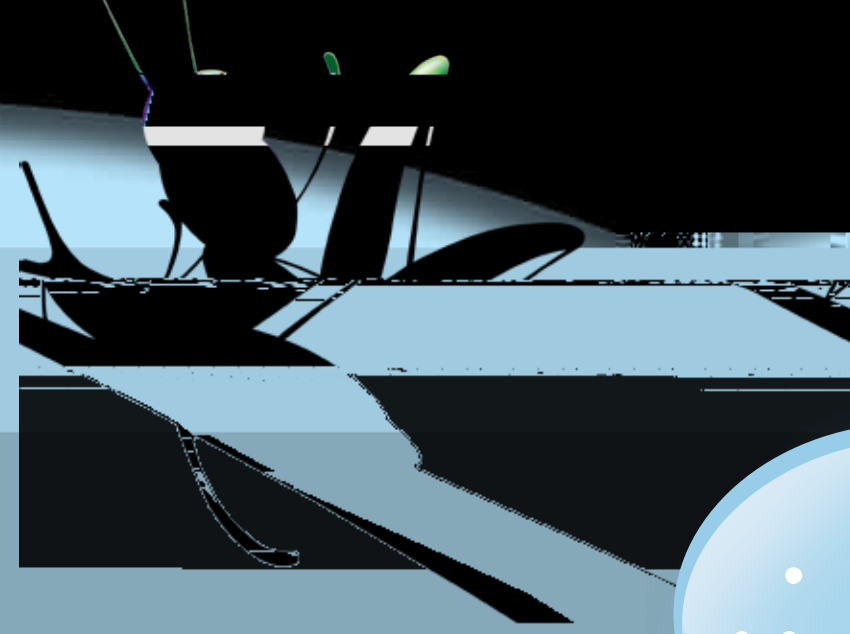
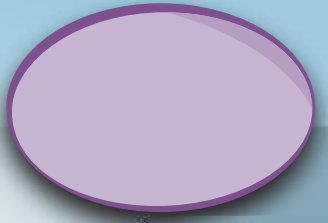
## English Language Learners

## Special Needs

## Gifted/Talented

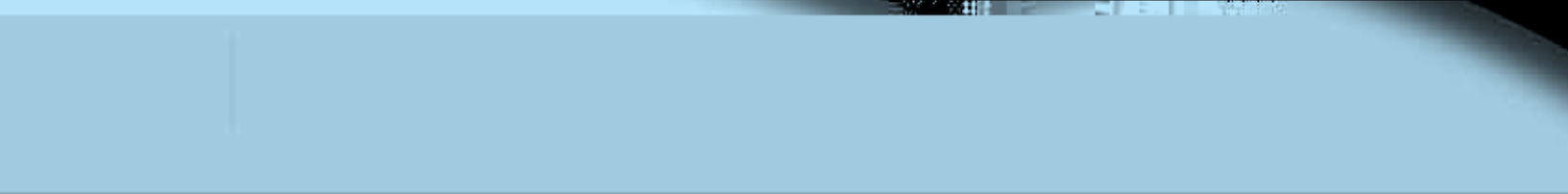
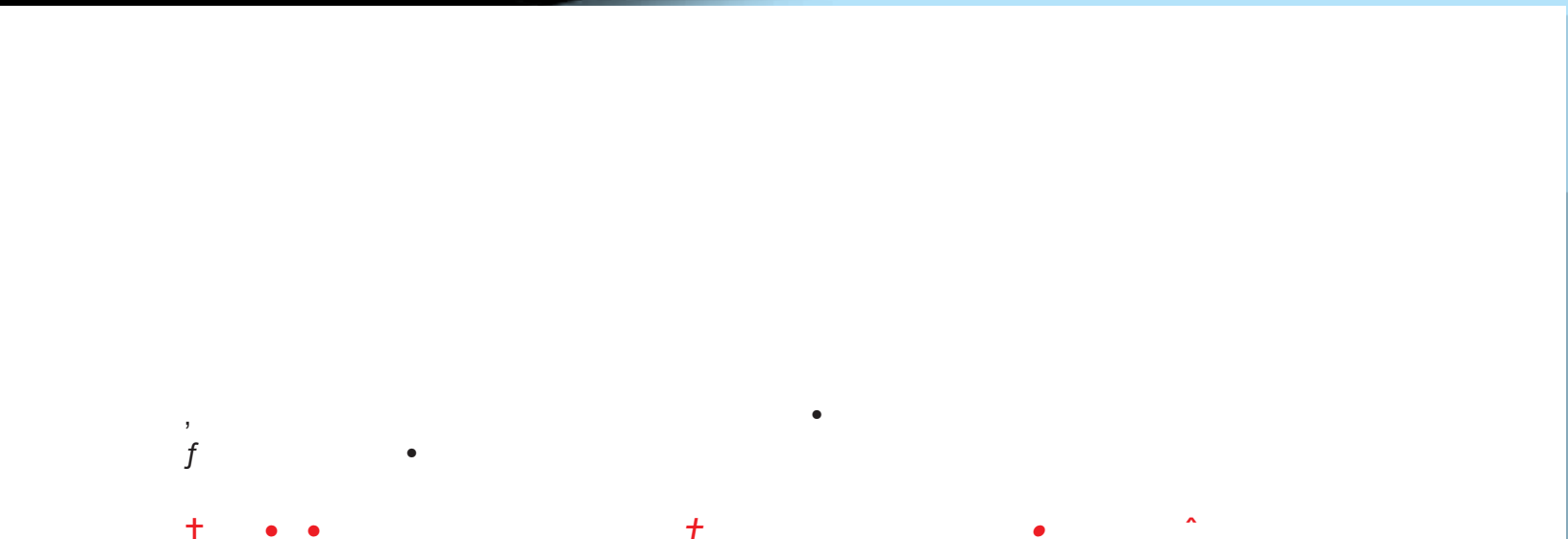
## At-Risk

## English Language Learners



•  
•  
• • •  
• •  
- € •  
•  
, €  
•  
• •  
€  
• •  
€  
•





,  
f

•

•

† • •

... †

... •

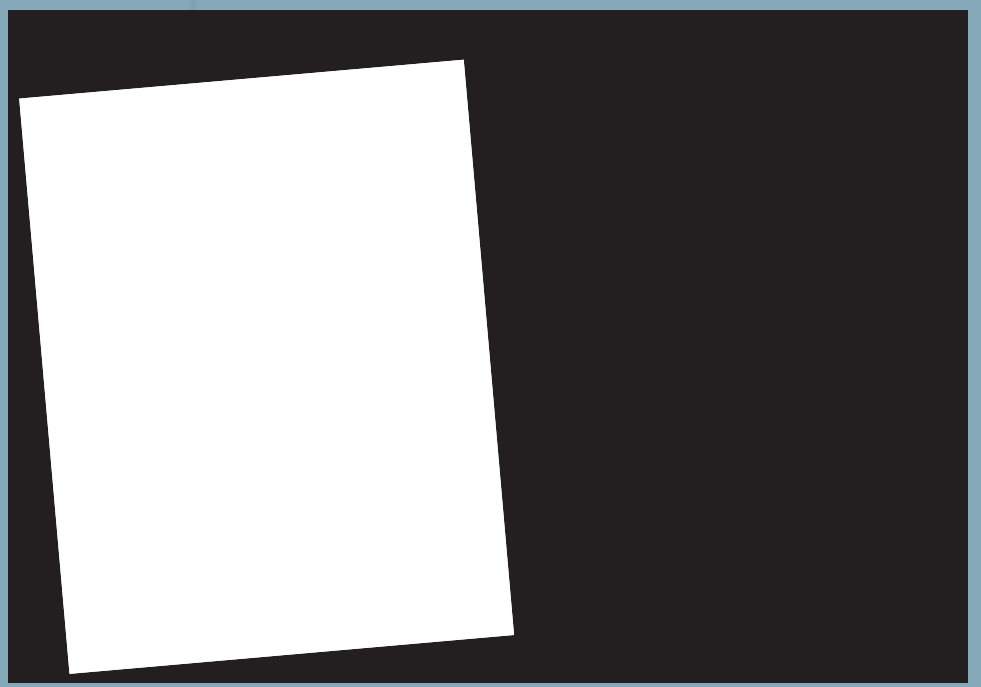
^

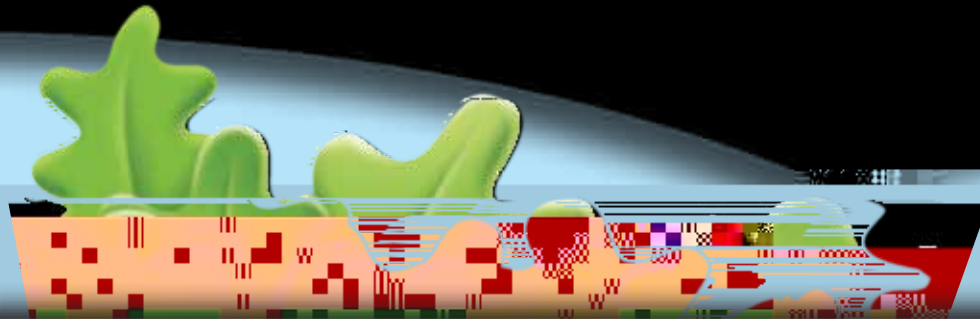
”

€

...

†





|   | ”   | † ”                           |
|---|---|-------------------------------|
| - | •<br>•<br>•<br>•<br>•                       | • •<br>• •<br>- €<br>• •<br>f |
| • | 55 4N q 1 089b 10 67 - €<br>235 21f 67 4 30 |                               |
|   |   |                               |

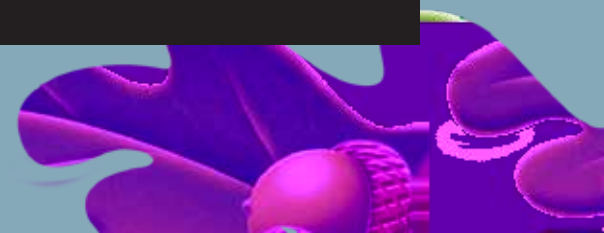
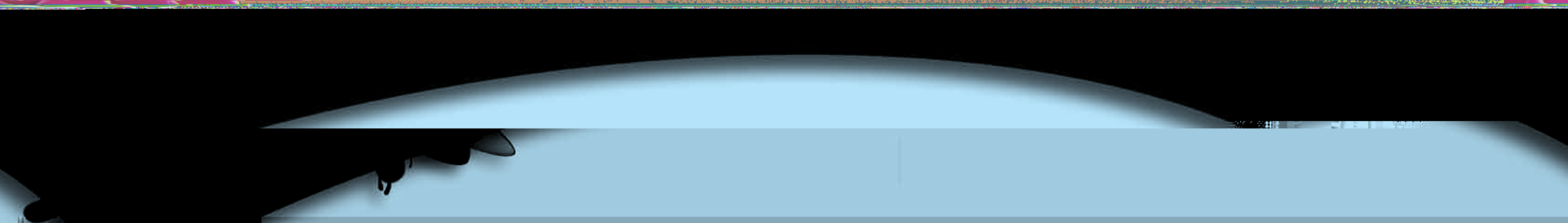
235 \034 034 t .032 67 4 0220 f b 20 3220 05 38( 023 ( 02n /GS3 gs 9 0 0 9 782.95 577 6 Tm [( 8.57)18(





€  
•  
• f .....  
•







## NEW Features to Transform Struggling Readers

- *Prevention* level targeting phonemic awareness, print concepts, and decoding
- *Integrated technology* to