

PARENTS' GUIDE: STUDENT REPORTS

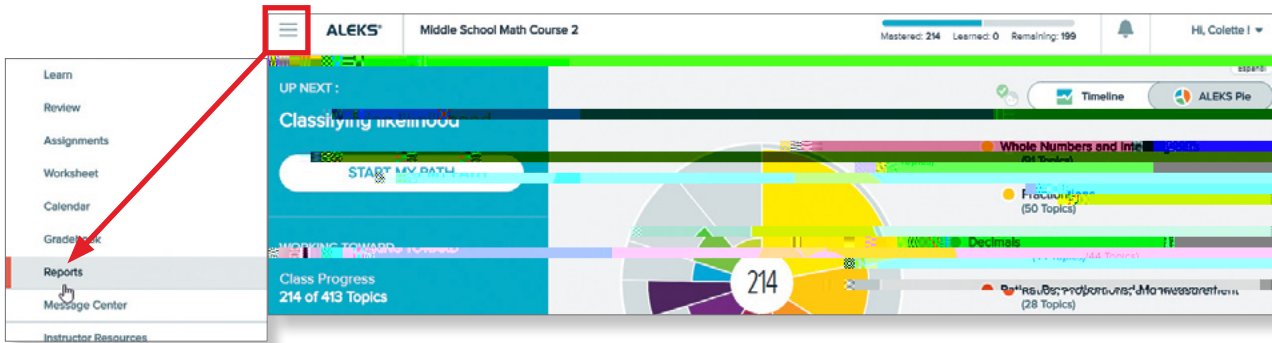
You can access a wide range of reports in *ALEKS* by logging in using your child's credentials:

www.aleks.com

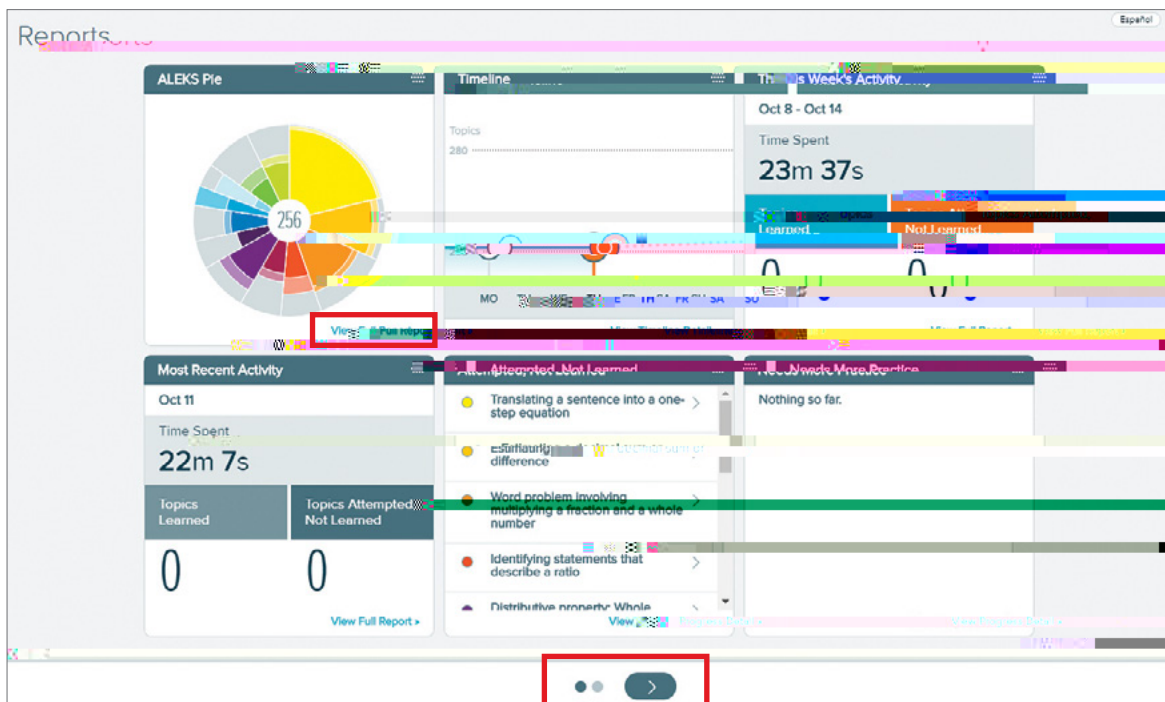
Username:

Password:

Select the **Main Navigation Menu** in the upper left corner and then select **Reports**.



The **Reports** dashboard displays quick overviews of important data applicable to your child's progress in *ALEKS*. You can move the tiles around by selecting the icon in the upper-right corner of a tile and dragging/dropping it into a new position on the page. Choosing the arrow at the bottom of the page will navigate to a second page of report tiles. Selecting **View Full Report** on a tile will give you more detailed information about that report.



ALEKS Pie Report

This report allows you to easily see overall progress toward completion of the class. Slices represent topic categories. Mastered, learned, and remaining topics are shown in different colors within each slice, and each slice is color-coded to match the list to the right of the pie. Click the forward arrow to view more topic category tiles.

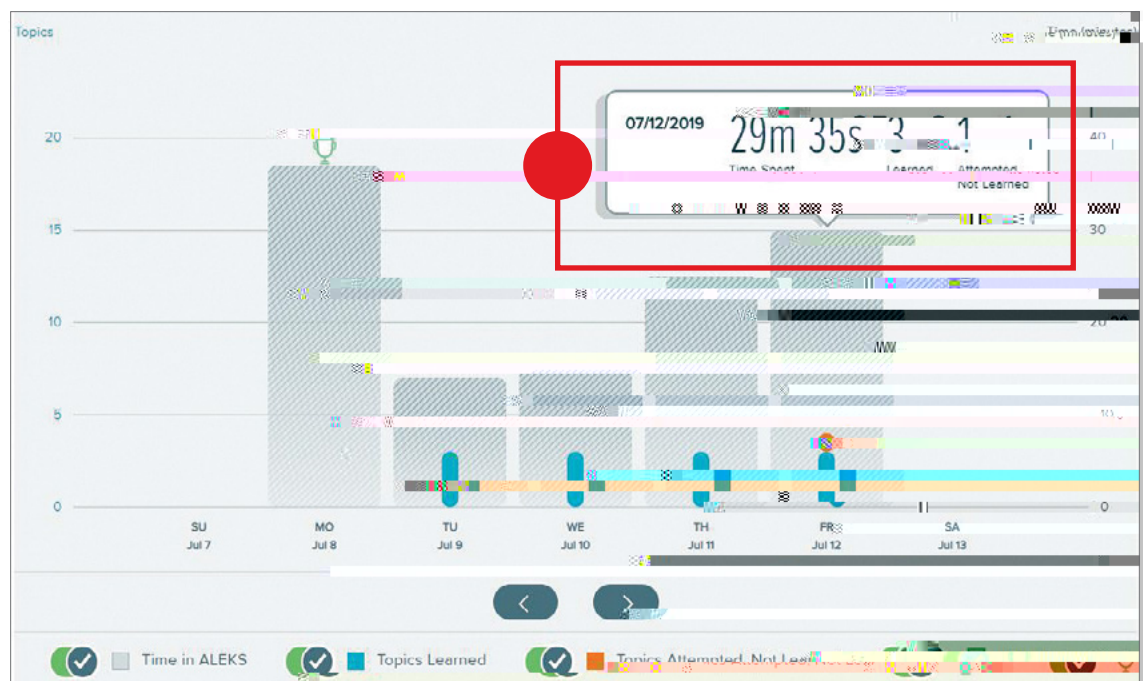
- a.** The darker color in the pie slice represents topics mastered (i.e., your child has shown mastery in a Knowledge Check).
- b.** The lighter color represents topics learned (i.e., your child has practiced this topic successfully in Learning Mode).
- c.** The outer part of the slice without color represents the topics remaining to be learned and mastered.

Time and Topic Report

Launch this report from the tile entitled **This Week's Activity**. Click **View Full Report**.

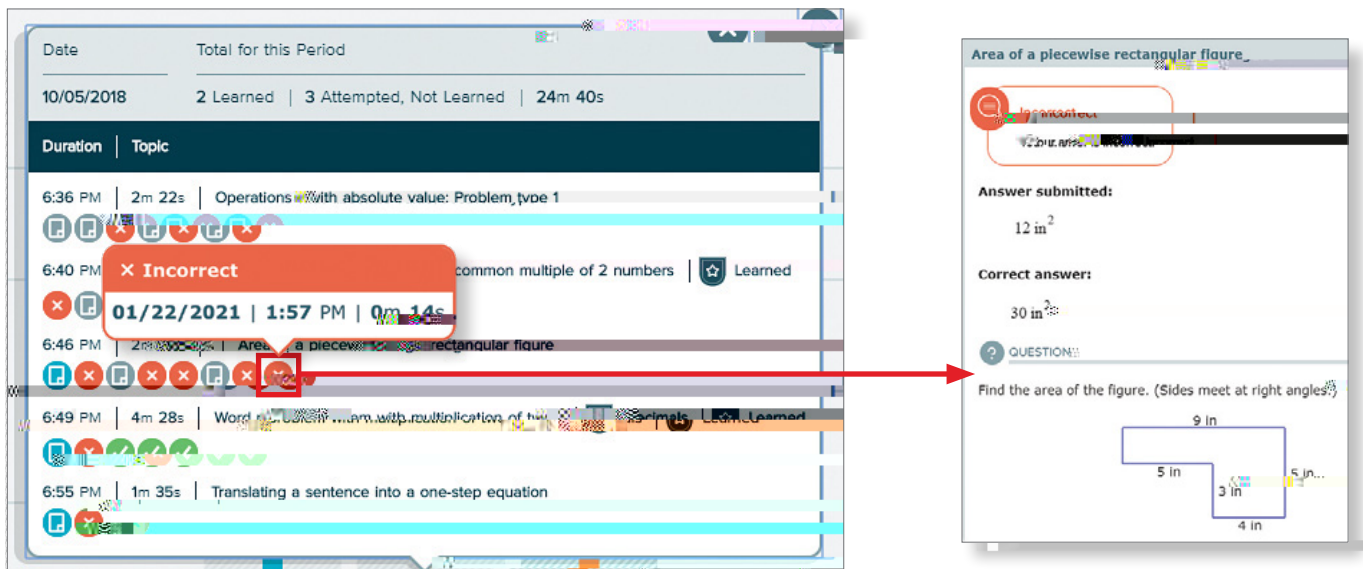
This report gives a daily breakdown of *ALEKS* usage. The view can be adjusted to a weekly, monthly, or cumulative view or a specific range. The height of the bar represents total login time. A helpful key is located at the bottom of the chart.

- Hover over a bar to see how much time was spent and which topics were attempted and learned on a given day.
- Select a bar to view the Learning Sequence Log for that day, which shows the sequence of actions followed to learn the topic, including the exact problems practiced and the answers entered.






Understanding the Learning Sequence Log

Hover over a problem icon for detail, and then click to see the question, the answer, and the answer your child submitted.



Tip: Using a designated space like an *ALEKS* journal or notebook is recommended so that an instructor can cross-reference your child's work, if needed, to provide support.

Time and Topic Report Icon Key

-  **Learning Page Icon:** This icon is always shown at the beginning of a topic that is NEW to the student. If you don't see this icon, the student has previously attempted the topic.
-  **Explanation Page Icon:** This icon indicates that the student clicked for an explanation. If you see this icon after the same problem is answered incorrectly twice, *ALEKS* automatically launched the explanation.
-  **Correct answer**



Incorrect on the last question indicates that the student chose to log out or move to a different topic.



Failed on the last question indicates that *ALEKS* suggested the student move to a different topic.



Learned Icon: This icon indicates that the topic was practiced successfully in Learning Mode and will be assessed on the next Knowledge Check.

