

# Glynn County School District, GA Serves Reach Next Generation with Achieve3000 Literacy

## DISTRICT PROFILE

### Name

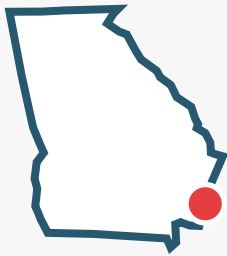
Glynn County School District

### Locations

Brunswick, GA

### Grades

PreK-12



... District ...  
... 000 ... 201-201 ...  
... District ...  
... 13,000 ...  
... 2012 ...  
... 000 ...  
... 3- ...



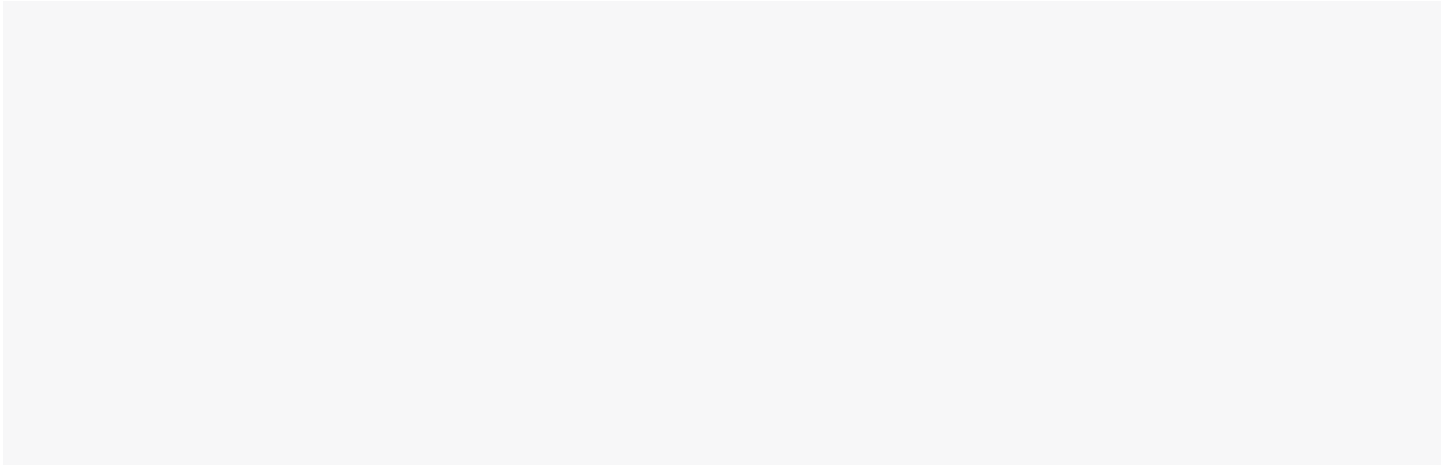
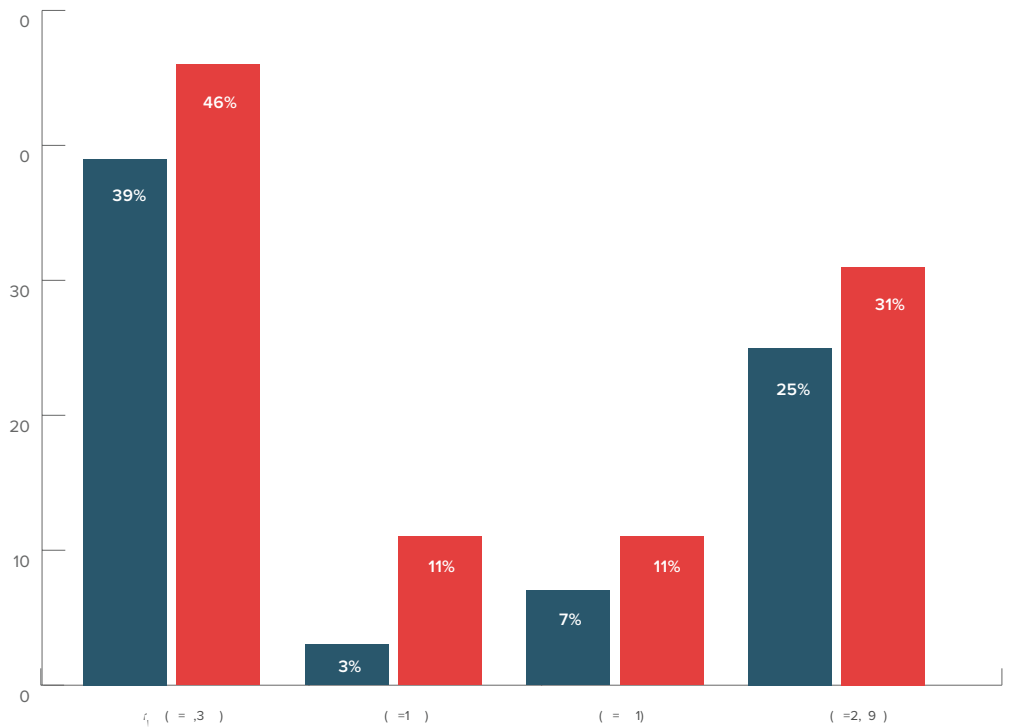
## Achieve3000

Over the course of the 2017-2018 school year, participating students in grades 4 through 8 logged in an average of 77 times, completed 54 lessons (with embedded assessments), and demonstrated an average first-try score of 73 percent on embedded assessments (see Table 1). On average, students spent 24 hours using *Achieve3000 Literacy*.

1: Achieve3000 Students' Program Usage Summary, 2017-2018 School Year

From spring 2017 to spring 2018, more than a quarter of students (27%) who used *Achieve3000 Literacy* improved at least one Achievement Level on the Georgia Milestones ELA assessment. By spring 2018, almost half (46%) of the students using *Achieve3000 Literacy* in Glynn County School District achieved proficiency at Achievement Level 3 or above, an increase of 7% from the prior spring. Notably, 11% of ELL students were performing at Achievement Level 3 or above by 2018 compared with only 3% in 2017. Students with an IEP made progress as well, with 11% performing at Achievement Level 3 or above by 2018 as compared with 7% in 2017. Students who qualify for free and reduced lunch made similar gains with 31% performing in Level 3 or higher in 2018 compared to 25% in 2017. As seen with Lexile score gains, students who used *Achieve3000 Literacy* with greater fidelity saw greater increases in GA Milestones ELA performance level. (See graph 2.) Three-quarters (74%) of students who completed over 80 lessons and maintained an average first-try score of 75% or above on *Achieve3000 Literacy*'s embedded assessment performed in Achievement Level 3 or above after one year of usage, an increase of 11% from the prior spring.

**2:** Percent of students using *Achieve3000 Literacy* with proficient scores (Level 3+)



## C

Overall, students in Glynn County School District showed improvement on both the LevelSet and the Georgia Milestones ELA tests after using *Achieve3000 Literacy* during the 2017-2018 school year. While students who used *Achieve3000 Literacy* with higher fidelity demonstrated the greatest gains on both the LevelSet and the GA Milestones ELA tests, students of different learning profiles such as English learners, students with an IEP and those who qualify for free and reduced lunch, showed improvements on both their growth in reading ability via Lexile gains and mastery

of state standards on the Georgia Milestones ELA test.

